



# INVA

SOLVING PARTICULAR PROBLEMS  
A JORIN PRODUCT

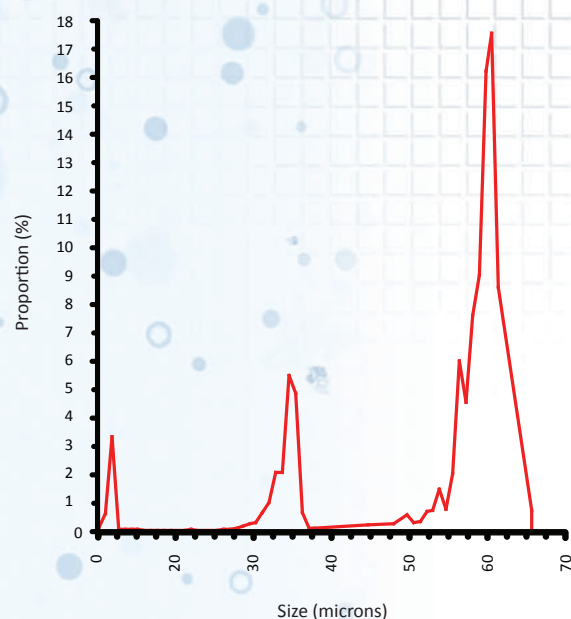


## The Industrial Visual Analyser for On-line Particle Analysis

For a wide range of applications, on-line particle analysis is the most appropriate and safest way to monitor process waters, oils, hydraulic fluids, fuels and other fluids for liquid and solid contaminants.

With a flow cell constructed from 316 stainless steel, sapphire and Viton™ the InVA is rugged and able to cope with real-world on-line process conditions including high fluid temperatures and pressures (up to 200 °C/392°F and 150 bar/2175 PSI) so there is no need for complicated sample conditioning systems and fluids are analysed in the most representative conditions possible.

The Jorin InVA uses automated video microscopy to provide enhanced particle data including both traditional particle counts and



High resolution particle size distribution

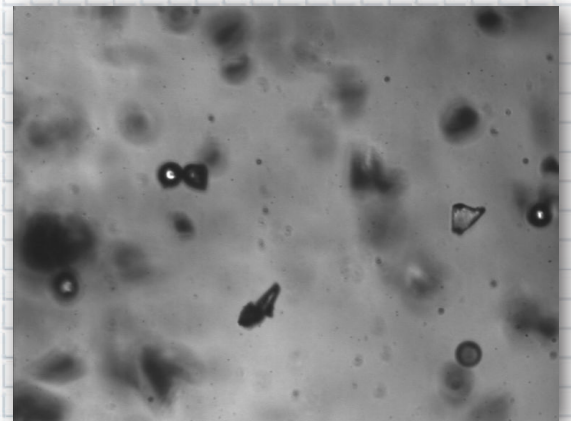
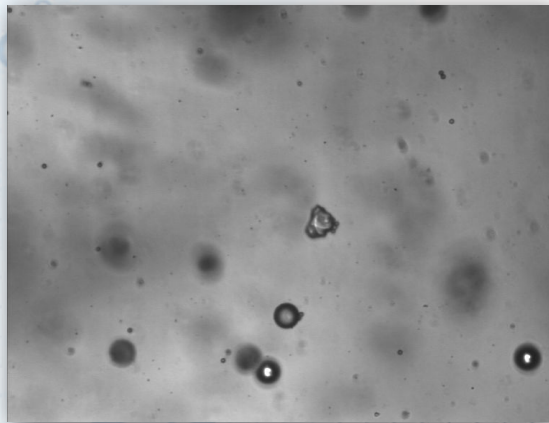
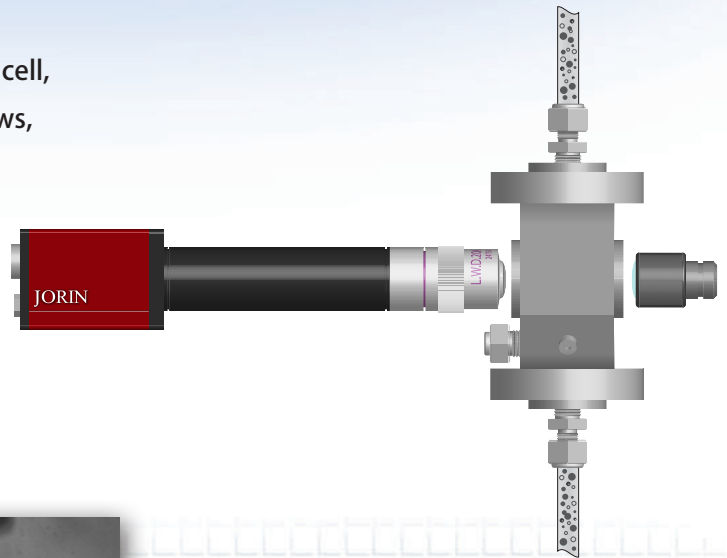
- ✓ High Pressure
- ✓ High Temperature
- ✓ Direct Connection
- ✓ High Resolution
- ✓ High Concentration
- ✓ Particle Identification



high resolution particle size distributions, with the capability to provide full differentiation between particulate types, e.g. fluid droplets and solid particles.

InVA is a single box product for simple installation and is entirely operated by touch-screen interface and is pre-configured to be usable straight out of the box without the need for user training.

Fluid flows through the InVA's flow cell, which has a pair of sapphire windows, and the camera looks through the fluid towards the light source so that the particulates are backlit, then individual images of the particles are frozen and analysed at very high speed.



Using image analysis techniques to differentiate between particles, droplets and gas bubbles the InVA can differentiate between types of particle and record particle counts, size distributions and concentrations.

Particle Size:	1 to 100 microns
Resolution:	0.5 microns
Particle Concentrations:	<1 to >1000 ppm
Sample Temperature:	-10 to 200 °C / 15 – 392°F
Sample Pressure:	<150 Bar / < 2175 PSI
Power Supply:	110 – 230V 50/60 Hz
Data Output:	Modbus TCP/IP
Enclosure:	304SS - Weight 20 Kgs / 44 lbs Size 300 x 300 x 200 mm / 12" x 12" x 8"
Sample Connections:	¼" NPT F
Options:	24 VDC Power Supply Modbus RTU or 4-20mA outputs Flow control module 316SS Enclosure

